



Sony Ericsson

Troubleshooting Guide

- mechanical -



Yendo, Yizo
W150, W150i, W150a



CONTENTS

1	Problem Areas	4
1.1	Power	4
1.1.1	Will not power on or will switch off randomly.....	4
1.2	Display	5
1.2.1	Graphics & Illumination	5
1.3	Illumination/LED.....	6
1.3.1	Home Key Illumination	6
1.3.2	Pre-Charge LED	6
1.4	Keys.....	7
1.4.1	Home Key	7
1.4.2	Power/Lock Key	7
1.4.3	Volume Key	7
1.5	Audio.....	8
1.5.1	Microphone	8
1.5.2	Ear Speaker	8
1.5.3	Loudspeaker	9
1.6	Vibrator	10
1.6.1	Vibrator not generating alerts	10
1.7	Camera.....	11
1.7.1	Camera defects.....	11
1.8	Touch Screen	12
1.8.1	Touch Screen malfunction.....	12
1.9	Memory Card	13
1.9.1	Memory Card not detected	13
1.10	FM Radio.....	14
1.10.1	No/Poor FM Radio reception	14
1.11	Sensor.....	15
1.11.1	Proximity Sensor malfunctions.....	15
1.12	Real Time Clock	16
1.12.1	Real Time Clock test fails	16
1.13	SIM.....	17
1.13.1	SIM not detected.....	17
1.13.2	Incorrect SIM indicated	17
1.14	Charging	18
1.14.1	Battery will not charge	18
1.15	Bluetooth	19
1.15.1	Bluetooth connection failure	19
1.16	Network & Signal.....	20
1.16.1	No/Poor signal	20
1.17	HandsFree by Wire.....	21
1.17.1	Connection to Portable HandsFree fails.....	21
1.18	Data Communication	22



1.18.1	Data transfer via System Connector fails.....	22
2	Revision History	23

1 Problem Areas

1.1 Power

1.1.1 Will not power on or will switch off randomly

Check:

Check whether the phone vibrates and the Home Key LEDs illuminates after the Power/Lock Key is depressed.

Action:

If activation of the Vibrator and Home Key LEDs illumination is detected, refer to section 1.2 'Display'.



Check:

Inspect the contact pads on the Battery

Action:

1. If dirty or oxidized – clean the pads.
2. If damaged – replace the Battery.



Check:

Visually inspect the Battery Connector.

Action:

1. If dirty or oxidized – clean the connector.
2. If adhesive is detected on the contact pins – use an eraser to gently rub off the adhesive.
3. If damaged – send to higher level of repair.



Check:

Inspect the Power/Lock Key on the Touch Front Cover Assy.

Action:

1. If the Power/Lock Key is dirty or clogged – clean it.
2. If the Power/Lock Key is damaged – replace it.
3. Send to higher level of repair.



Problem Areas

1.2 Display

1.2.1 Graphics & Illumination

Check:

Check whether the phone vibrates and the Home Key LEDs illuminates after the Power/Lock Key has been pressed.

Action:

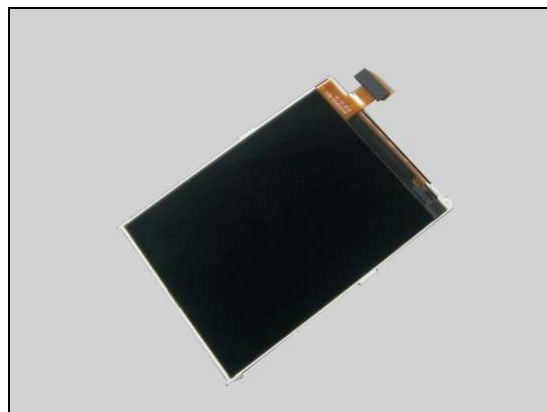
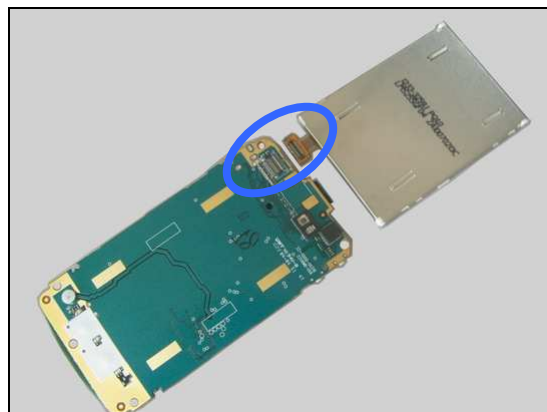
If the activation described above is not detected, refer to section 1.1 'Power'.

Check:

Check the Display connectors.

Action:

1. If dirty or oxidized – clean the male and female BTB connectors.
2. If not properly connected – reconnect it.
3. Replace the Display.
4. Send to higher level of repair.



Problem Areas

1.3 Illumination/LED

1.3.1 Home Key Illumination

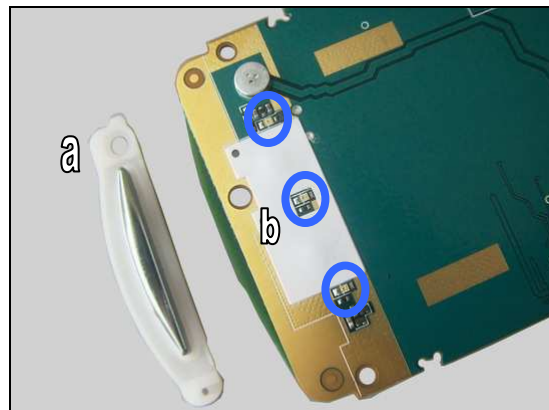
Inspect the Home Key (a) and the Home Key LEDs (b) on the Main PBA.

Action:

1. If dirty – clean them.

2. If the Home Key is damaged – replace it.

3. Send to higher level of repair.



1.3.2 Pre-Charge LED

Check:

Inspect the Pre-Charge LED window from outside.

Action:

1. If dirty – clean it

2. If the Pre-Charge LED window is scratched or damaged – replace the Touch Front Cover Assy.

Check:

Inspect the Pre-Charge LED window from inside

Action:

1. If dirty – clean it

2. If the Pre-Charge LED window is scratched or damaged – replace the Touch Front Cover Assy.

3. Send to higher level of repair.



Problem Areas

1.4 Keys

1.4.1 Home Key

Inspect the Home Key from outside.

Action:

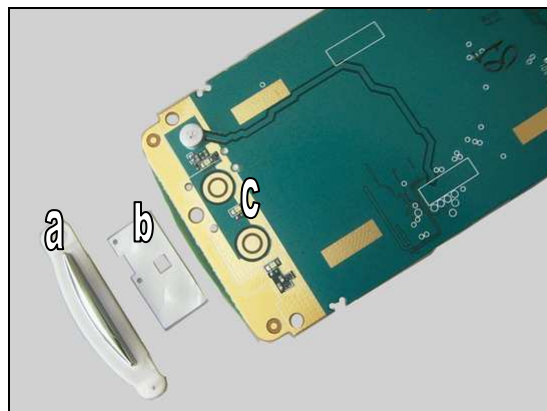
1. If dirty – clean it.
2. If damaged – replace the Home key.

Check:

Inspect the Home key (a), Home Key Domesheet (b) and contact pads on the Main PBA (c).

Action:

1. If dirty or oxidized – clean them.
2. If the Home Key or Home Key Domesheet are damaged – replace them.
3. Send to higher level of repair.



1.4.2 Power/Lock Key

Check:

Inspect the Power/Lock Key on the Touch Front Cover Assy.

Action:

1. If the Power/Lock Key is dirty – clean it.
2. If the Power/Lock Key is damaged – replace it.
3. Send to higher level of repair.



1.4.3 Volume Key

Check:

Inspect the Volume Key.

Action:

1. If Volume Key is dirty – clean it.
2. If Volume Key is damaged – replace it.
3. Send to higher level of repair.



Problem Areas

1.5 Audio

1.5.1 Microphone

Check:

Inspect the Microphone's external port.

Action:

1. If clogged – clean the port.

2. If damaged – replace the Touch Front Cover Assy.

3. Send to higher level of repair



1.5.2 Ear Speaker

Check:

Inspect the Ear Speaker's external port.

Action:

1. If clogged – clean it.

2. If damaged – replace the Touch Front Cover Assy and Ear Speaker Sponge.





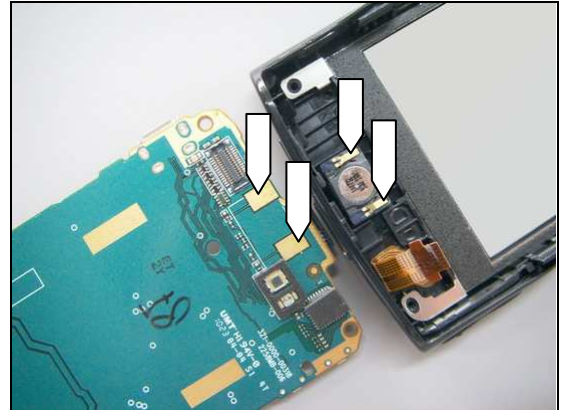
Problem Areas: Audio

Check:

Inspect the Ear Speaker's pins and pads

Action:

1. If dirty or oxidized – clean the pins and pads.



2. If damaged – replace the Ear Speaker.
3. Send to higher level of repair



1.5.3 Loudspeaker

Check:

Inspect the Speaker Mesh.

Action:

1. If clogged – clean it.
2. If damaged – replace the Speaker Mesh.

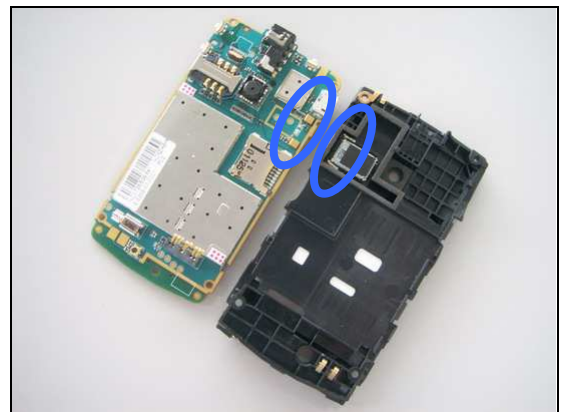


Check:

Inspect the speaker chamber sponge and the Loudspeaker's pins & pads.

Action:

1. If the pads and pins are dirty or oxidized – clean them.
2. If the loudspeaker is damaged – replace the Loudspeaker and Speaker Sponge.
3. If speaker chamber sponge is damaged – replace the Rear Cover Assy.
3. Send to higher level of repair.





Problem Areas

1.6 Vibrator

1.6.1 Vibrator not generating alerts

Action:

Send to higher level of repair.

Problem Areas

1.7 Camera

1.7.1 Camera defects

Check:

Inspect the Camera Window.

Action:

1. If dirty – clean it.

2. If scratched or damaged – replace it.

Check:

Inspect the Camera and its socket.

Action:

1. If improperly installed – re-install the Camera.
2. Replace the Camera.
3. Send to higher level of repair.



Problem Areas

1.8 Touch Screen

1.8.1 Touch Screen malfunction

Check:

Inspect the touch screen of the Touch Front Cover Assy.

Action:

1. If dirty – clean it.

2. If damaged – replace the Touch Front Cover Assy.

Check:

Visually inspect the Touch FPC Connector Mylar, Touch FPC and Touch FPC connector.

Action:

1. If dirty or oxidized – clean them and replace a new Touch FPC Connector Mylar.
2. If not properly connected – reconnect them and replace a new Touch FPC Connector Mylar.
3. If Touch FPC is damaged – replace the Touch Front Cover Assy and a new Touch FPC Connector Mylar.
4. Send to higher level of repair.



Problem Areas

1.9 Memory Card

1.9.1 Memory Card not detected

Check:

Inspect the Memory Card holder.

Action:

1. If dirty or oxidized – clean the holder.
2. Send to higher level of repair



Problem Areas

1.10 FM Radio

1.10.1 No/Poor FM Radio reception

Check:

Inspect the Audio Jack.

Action:

1. If dirty or oxidized – clean it.
2. Send to higher level of repair.



Problem Areas

1.11 Sensor

1.11.1 Proximity Sensor malfunctions

Check:

Inspect the two sensor windows on the Touch Front Cover Assy from outside.

Action:

1. If dirty – clean them.
2. If the sensor windows are scratched or damaged – replace the Touch Front Cover Assy.



Check:

Inspect the two sensor windows on the Touch Front Cover Assy from inside.

Action:

1. If dirty – clean them.
2. If the sensor windows are scratched or damaged – replace the Touch Front Cover Assy.

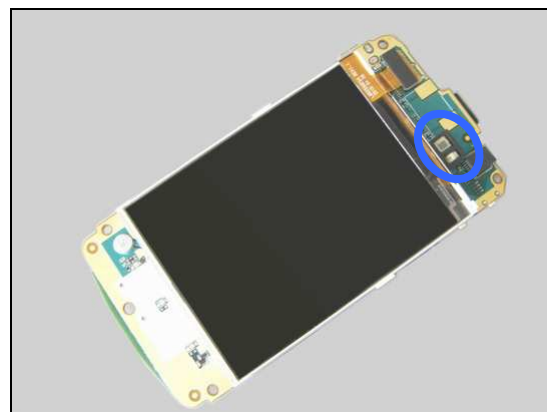


Check:

Inspect the Proximity Sensor Rubber on the Main PBA.

Action:

1. If not installed in its proper position – re-install it.
2. If damaged – replace it.

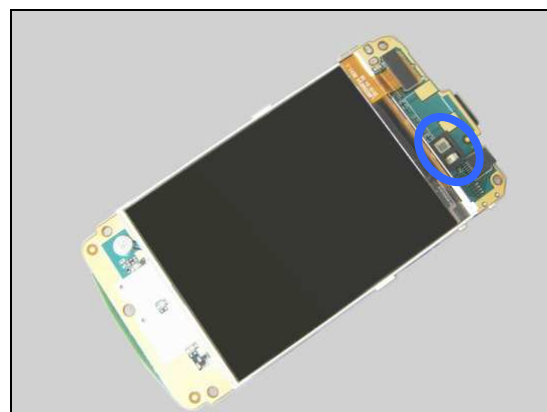


Check:

Inspect the two sensors on the Main PBA.

Action:

1. If dirty – clean them.
2. Send to higher level of repair.





Problem Areas

1.12 Real Time Clock

1.12.1 Real Time Clock test fails

Action:

Send to higher level of repair.

Problem Areas

1.13 SIM

1.13.1 SIM not detected

Check:

Inspect the SIM holder.

Action:

1. If dirty or oxidized – clean the holder.
2. Send to higher level of repair.



1.13.2 Incorrect SIM indicated

Check:

Check whether the phone is locked to a particular operator and whether the correct operator SIM is being used.

Action:

1. Use a proper operator SIM or test SIM.
2. Send to higher level of repair.



Problem Areas

1.14 Charging

1.14.1 Battery will not charge

Check:

Inspect the contact pads of the Battery.

Action:

1. If dirty or oxidized – clean the pads.
2. If damaged – replace the Battery.



Check:

Inspect the Battery Connector.

Action:

1. If dirty or oxidized – clean the connector.
2. If adhesive is detected on the contact pins – use an eraser to gently rub off the adhesive.
3. Send to higher level of repair.



Check:

Inspect the Micro USB Connector.

Action:

1. If dirty or oxidized – clean the connector.
2. Send to higher level of repair



Problem Areas

1.15 Bluetooth

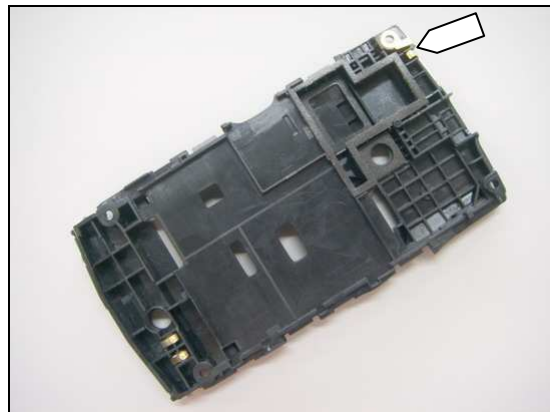
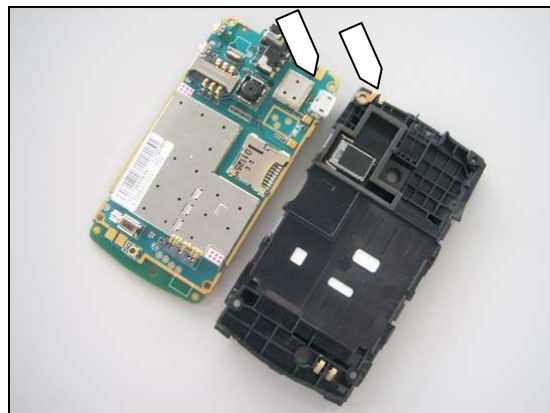
1.15.1 Bluetooth connection failure

Check:

Inspect the Bluetooth antenna contact pad/pin on the Main PBA and the Rear Cover Assy.

Action:

1. If dirty or oxidized – clean the pads and pins.
2. If the contact pin is damaged – replace the Rear Cover Assy.
3. Send to higher level of repair.



Problem Areas

1.16 Network & Signal

1.16.1 No/Poor signal

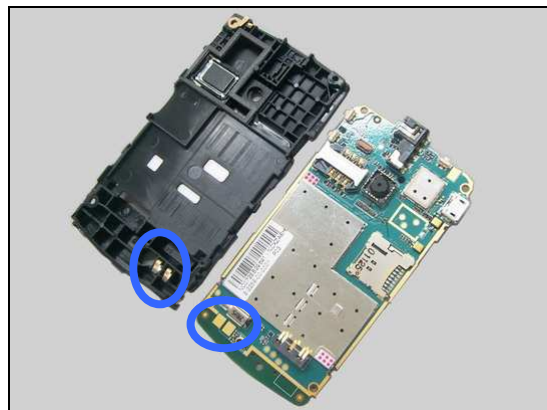
Check:

Ensure that a correct SIM is installed.

Inspect the antenna contact pads/pins on the Main PBA and Rear Cover Assy.

Action:

1. If dirty or oxidized – clean the pads and pins.
2. If the contact pins are damaged – replace the Rear Cover Assy.
3. Send to higher level of repair.



Problem Areas

1.17 HandsFree by Wire

1.17.1 Connection to Portable HandsFree fails

Check:

Inspect the Audio Jack.

Action:

1. If dirty or oxidized – clean the Audio Jack.
2. Send to higher level of repair.



Problem Areas

1.18 Data Communication

1.18.1 Data transfer via System Connector fails

Check:

Inspect the Micro USB Connector.

Action:

1. If dirty or oxidized – clean the connector.
2. Send to higher level of repair.





2 Revision History

Rev.	Date	Changes / Comments
1	2010-Nov-08	Initial release